



REIMBURSEMENT SERVICES

WHAT IS THE WSAW PROGRAM

Did you know a portion of your workers' compensation premium is used to pay for this program? WA Stay at Work is a financial program administered by Labor and Industries (L&I), incentivizing employers to bring their injured workers back to modified duty or transitional work as soon as possible.

FOR INJURIES ON OR AFTER JANUARY 1, 2025

WAGE REIMBURSEMENT

IT PAYS

- » 50% of base wage
- » Excluding tips, commissions, bonuses, board, housing, fuel, health care, dental care, vision care, per diem, reimbursement for work related expenses or any other payments

FOR UP TO

- » 120 days actually worked (not necessarily consecutive) or
- » \$25,000 (whichever comes first)
- » 24-month period per claim

TRAINING/EQUIPMENT REIMBURSEMENT

TOOLS & EQUIPMENT: \$5,000

Tools and equipment become the property of the employer

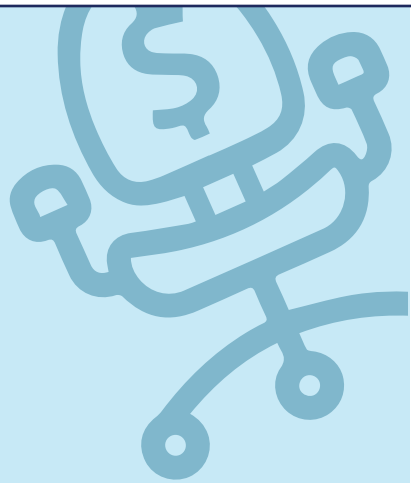
TRAINING: \$2,000

For training necessary for the modified-duty or transitional work

- » Tuition
- » Books
- » Fees

CLOTHING: \$1000

Becomes property of the worker



COST OF SERVICE

10% of the amount reimbursed per claim with a minimum charge* of \$50 and a maximum charge of \$350.

**We will not submit for reimbursement unless the estimated reimbursement amount is greater than \$50. Invoices will be sent to you after we are notified that the reimbursement check has been mailed to you.*

Reimbursement From L&I: Eligible claims can be reimbursed up to a certain amount. You can request wage reimbursement on old claims going back as far as one year.

DOCUMENTS NEEDED FROM EMPLOYERS

To take advantage of this program, participants need to supply the required documents (below) and abide by the GRIP KOS requirements.

SERVICES PROVIDED FOR EMPLOYERS

- » Monthly reports outlining possible reimbursable claims.
- » Submission of correct forms and documentation to Labor and Industries for reimbursement.
- » Tracking of the reimbursements (after submission, reimbursements from L&I typically take about 6-8 weeks).

CONTACTS

Questions/More Information:
Reimbursement Services
saw@ernwest.com

- 1** Written description of modified job approved by doctor
 - Return to Work Form
 - Modified Duty Job Description
- 2** Reasonably continuous Job offer letter
 - Job Offer Letter
- 3** Verification of days worked and payments correspond to modified job
 - Payroll Records
 - Pay Stubs, Time Cards

www.ernwest.com